



A Guide to Education in International Schools

In this guide, we have condensed and summarized the most basic and relevant information about education in International Schools in Singapore.

Admission Into Schools

Public Schools

All international students who wish to seek admission to the Primary 1 level of a mainstream primary school are required to undergo the P1 Registration Exercise. Please visit the MOE website for more information.

For Primary 2 to 5 and Secondary 1 to 3 admissions, students must sit for the Admissions Exercise for International Students (AEIS) test in order to join in January of the following year.

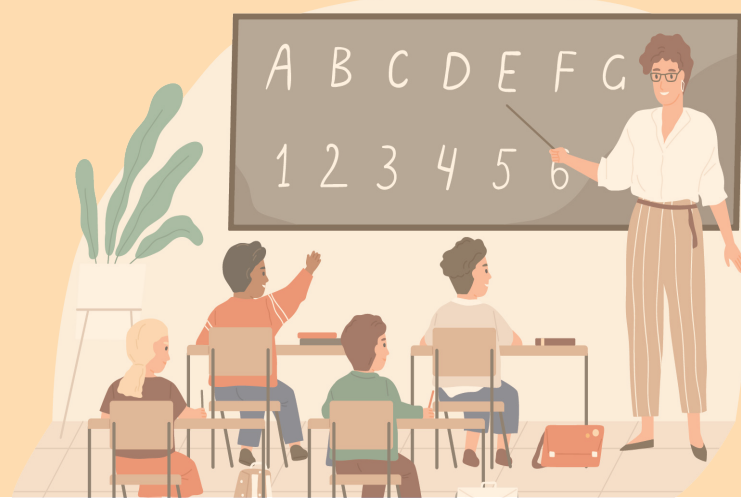
English is the medium of instruction. International students are encouraged to prepare for the centralised test. They should be familiar with the English and Mathematics syllabuses of the level preceding the one they are applying for.

Private International Schools

International students who wish to seek admission to a pre-school, private international school or post-secondary institution (e.g. university or polytechnic) should approach the pre-school, private school or institution directly.

Student's Pass

International students who wish to study in a public, government-aided or private school require a Student's Pass, unless he or she is a holder of a Dependant's Pass (DP) or an Immigration Exemption Order (IEO).



Curriculum Breakdown

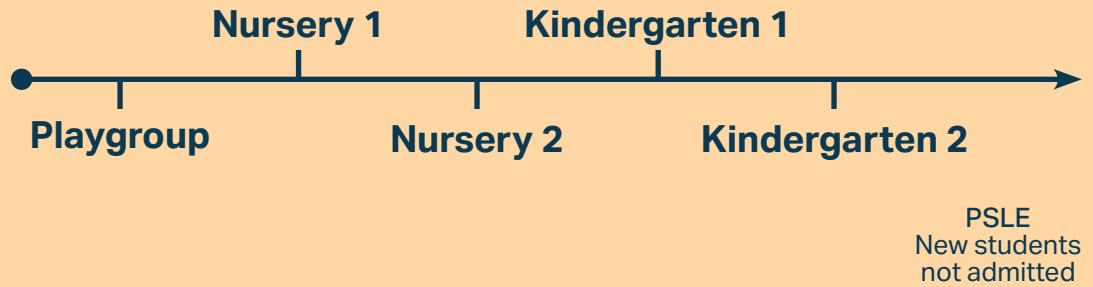
Public Schools



Age of Admission

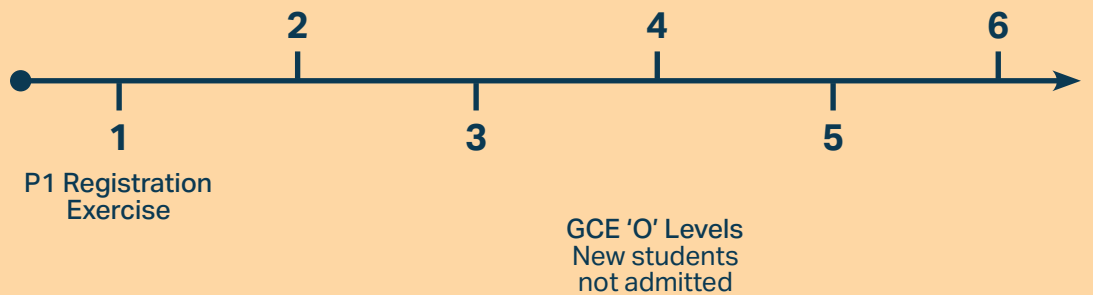
Pre-School

2 – 6 years old



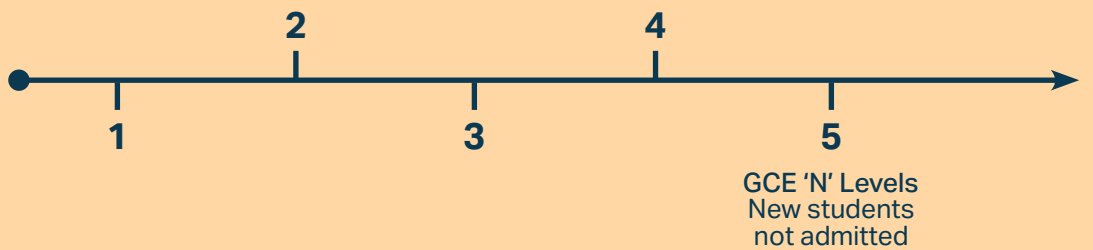
Primary

7 – 12 years old

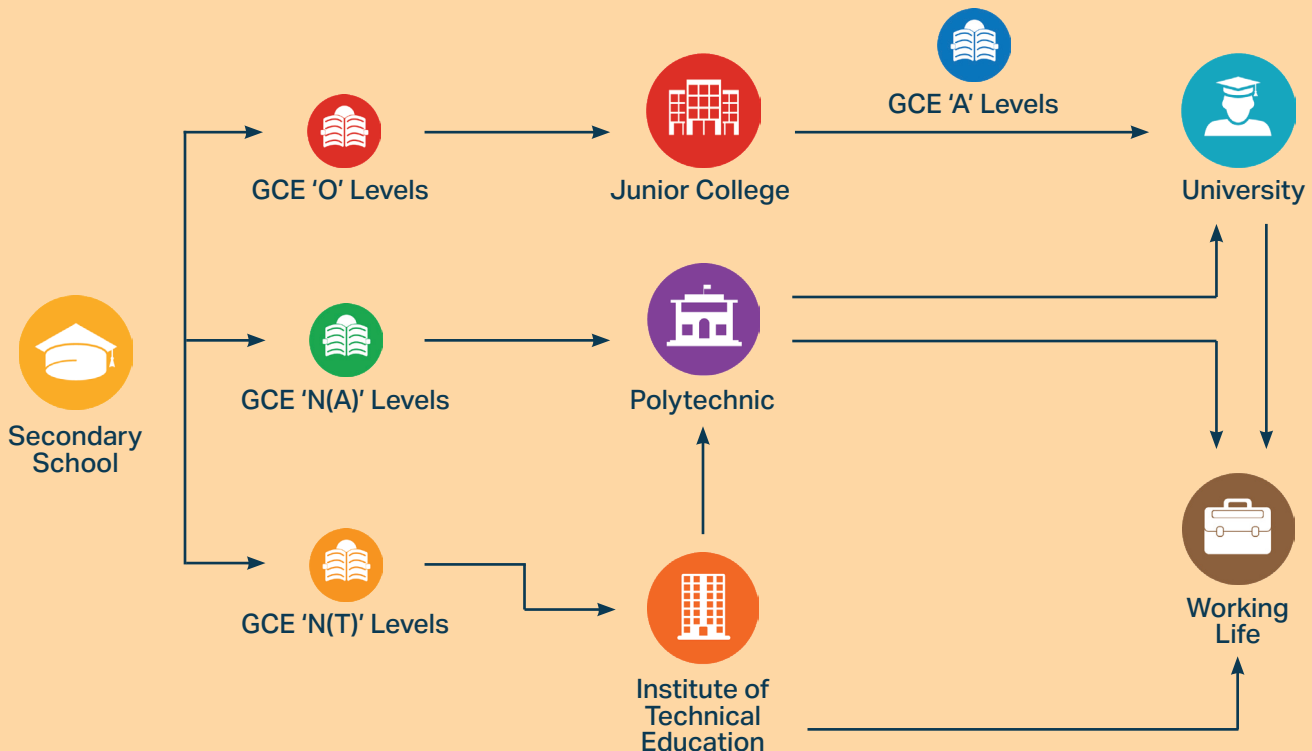


Secondary

13 – 16 years old



Post-Secondary Options



Junior Colleges

Anderson Serangoon Junior College
Anglo-Chinese Junior College
Catholic Junior College
Hwa Chong Institution
Tampines Meridian Junior College
Millennia Institute
Nanyang Junior College
National Junior College
Jurong Pioneer Junior College
St. Andrews Junior College
Temasek Junior College
Victoria Junior College
Yishun Innova Junior College

Polytechnics

Ngee Ann Polytechnic
Nanyang Polytechnic
Republic Polytechnic
Singapore Polytechnic
Temasek Polytechnic

Universities

National University of Singapore (NUS)
Nanyang Technological University (NTU)
Singapore Management University (SMU)
Singapore University of Technology and Design (SUTD)
Singapore Institute of Technology (SIM)
Singapore University of Social Sciences (SUSS)

Junior College vs Polytechnic

| | Junior College | Polytechnic |
|---------------------------|---|--|
| Duration of Study | 2 years | 3 years |
| Cost | \$6 - \$2,127 (per month) | \$3000 - \$11,900 (annually) |
| Transportation Fee | Student Fare | Adult Fare |
| Attire | Uniform | No Uniform |
| Average Workload per Week | ~40 hours Very academically rigorous, focus is on independent textbook studying with intense examination periods | ~25 hours More group projects, application-based projects, textbook studying with exams |
| Courses and Subjects | General Paper Project Work Math Physics, Chemistry, Biology History, Geography Economics | Highly-specialised courses meant to equip students with real-life application skills E.g Biomedical Engineering, Mass Communication |



Private International Schools

Curriculum and Level Breakdown

The curriculum and level breakdown varies greatly between each international school depending on nationality and its curriculum available. Here are some of the more popular curriculum and the schools that offer it.

General Certificate of Secondary Education (GCSE)

Australian International School
Dover Court International School
Dulwich College (Singapore)
EtonHouse International Schools
Marlborough College Malaysia
One World International School
Tanglin Trust School
The Winstedt School

International General Certificate of General Education (IGCSE)

Australian International School
Dover Court International School
Dulwich College (Singapore)
GEMS World Academy (Singapore)
Global Indian International School
Marlborough College Malaysia
Nexus International School (Singapore)
One World International School
Tanglin Trust School
UWC South East Asia

International Baccalaureate (IB)

Australian International School
Canadian International School
Chatsworth International School
Dulwich College (Singapore)
EtonHouse International School and Preschool
GEMS World Academy (Singapore)
GESS
Global Indian International School
Hillside World Academy
ISS International School
Marlborough College Malaysia
Nexus International School (Singapore)
One World International School
Overseas Family School
Stamford American International School
Tanglin Trust School
UWC South East Asia

Private Schools for Different Nationalities

India

Global Indian International School

Korea

Singapore Korean International School

Japan

Waseda Shibuya Senior High School

Australia

Australian International School Singapore

Europe

German Europe School Singapore

International French School

Tanglin Trust School

Dover Court International School

United States of America

Stamford American International School

Singapore American School

Cost of Local Schools for Foreigners

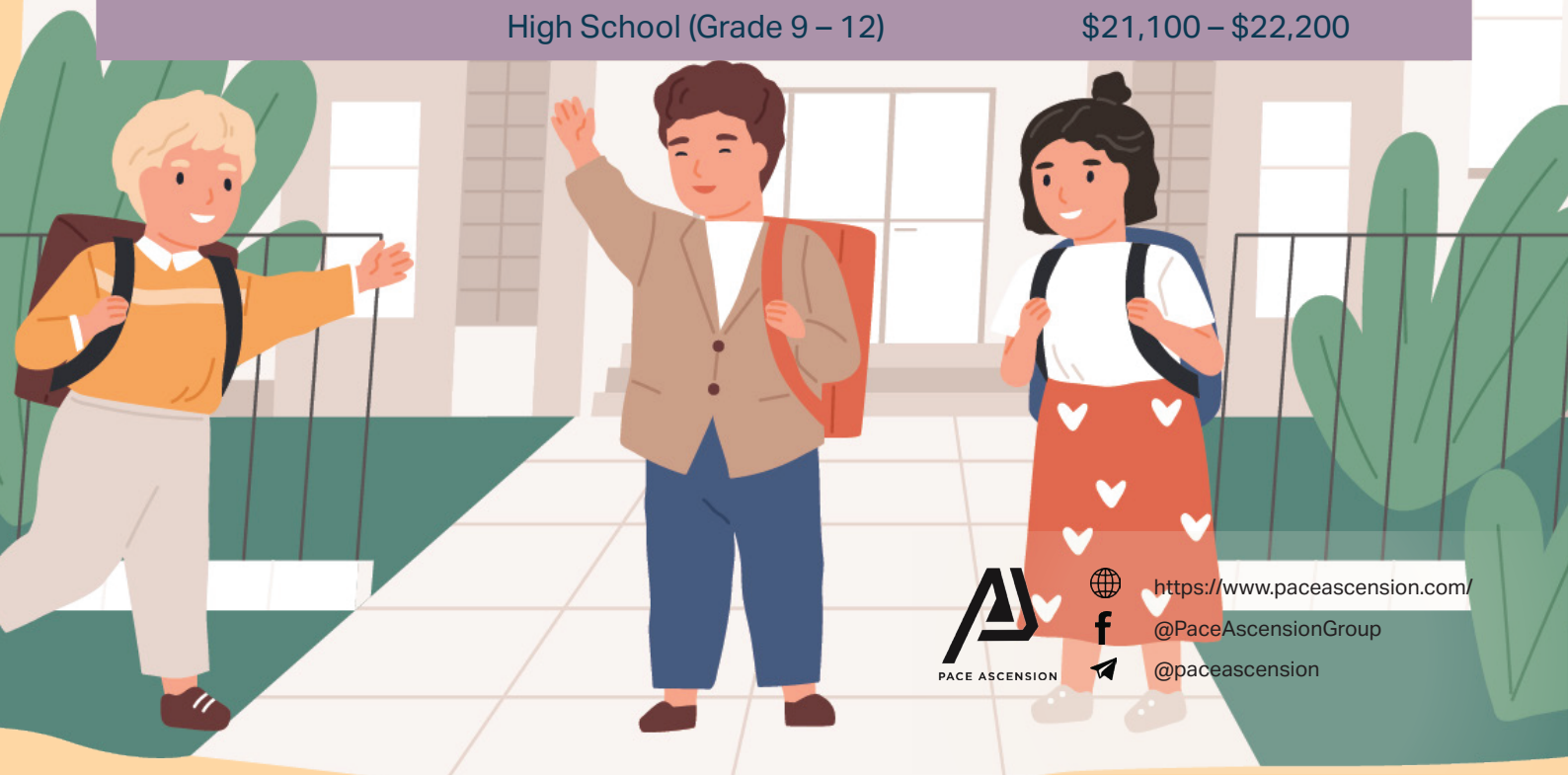
| Level | Nationality | Total Monthly Fee |
|---|-----------------------------------|-------------------|
| Primary | Singapore PR | \$255 |
| | International Student (ASEAN) | \$515 |
| | International Student (non-ASEAN) | \$875 |
| Secondary | Singapore PR | \$500 |
| | International Student (ASEAN) | \$900 |
| | International Student (non-ASEAN) | \$1,750 |
| Pre-University | | |
| Junior College | Singapore PR | \$580 |
| | International Student (ASEAN) | \$1,100 |
| | International Student (non-ASEAN) | \$2,100 |
| Independent Junior College | Singapore PR | \$600 – \$1000 |
| | International Student (ASEAN) | \$1,000 – \$2,500 |
| | International Student (non-ASEAN) | \$1,000 – \$2,500 |
| Polytechnic | Singapore PR | \$6,200 (yearly) |
| | International Student | \$11,900 (yearly) |
| Institute of Technical Education (ITE) – NITEC | Singapore PR | \$6,150 (yearly) |
| | International Student | \$17,400 (yearly) |
| Institute of Technical Education (ITE) – Higher NITEC | Singapore PR | \$7,760 (yearly) |
| | International Student | \$20,550 (yearly) |



Cost of International Schools

| School | Course | Fee |
|--|---|--------------------------------|
| Global Indian International School | Central Board of Secondary Education (Grade 1 - 12) | \$6,860 – \$8,712 (per term) |
| | Cambridge Lower Secondary Primary | \$8,173 - \$10,110 (per term) |
| | IB Primary Years Program (Grade 1 - 5) | \$7,594- \$7739 (per term) |
| | Cambridge IGCSE | \$9,009 (per term) |
| | IB Diploma Programme Y1 | \$10,811 (per term) |
| | IB Diploma Programme Y2 | \$10,886 (per term) |
| Stamford American International School | Pre-Nursery and Nursery | \$18,414 – \$28,324 (annually) |
| | Pre-Kindergarten | \$23,470 – \$36,300 (annually) |
| | Kindergarten 1 | \$28,890 – \$42,612 (annually) |
| | Elementary School | \$43,551 (annually) |
| | Middle School | \$47,251 (annually) |
| | High School | \$49,327 (annually) |
| Tanglin Trust School | Enrollment Fee | \$3,500 (per application) |
| | Capital Levy | \$4,500 (per student) |
| | Infant | \$10,663 – \$13,356 (per term) |
| | Junior | \$13,980 (per term) |
| | Senior | \$15,770 – \$16,510 (per term) |
| | Sixth Form | \$17,115 (per term) |

| School | Course | Fee |
|--|--|---|
| United World College South East Asia (UWCSEA) | Application Fee – Day Student (per campus, per application) | \$621 (Single campus) \$1,242 (Dual campus) |
| | Application Fee – Boarding Student (available from Grade 8, per application) | \$833 |
| | Enrollment Fee (one-time) | \$4,946 |
| | K1 – Grade 1 | \$43,620 (per term, first year) \$39,153 (per term, subsequent years) |
| | Grade 2 - 5 | \$44,607 (per term, first year) \$40,140 (per term, subsequent years) |
| | Grade 6 – 10 (I)GCSE | \$51,222 (per term, first year) \$46,755 (per term, subsequent years) |
| | Grade 11 - Grade 12 | \$53,346 (per term, first year) \$48,879 (per term, subsequent years) |
| Overseas Family School | Registration Fee (per student, all levels) | \$2,000 |
| | Pre-Kindergarten – K2 | \$8,550 – \$16,100 (per term) |
| | Elementary (Grade 1 – 5) | \$17,400 |
| | Middle School (Grade 6 – 8) | \$18,600 |
| | High School (Grade 9 – 12) | \$21,100 – \$22,200 |



<https://www.paceascension.com/>
@PaceAscensionGroup
@paceascension